



Dear Friends,

Fiscal year 2022 was a busy year for the Providence family, one marked by accelerated progress toward our strategic goals and a steadfast commitment to support people to live their best lives in their communities in ways that matter to each person.

To keep our business model resilient and provide the best possible supports, Providence is now licensed to provide a variety of additional support services, including residential, supported, and shared living services throughout most of Maryland. We are excited to begin to offer residential supports through the recent affiliation and planned merger of Charles County HARC into Providence. Other enhancements include building and expanding our Career Services, personal support services and mental health supports.

Talented and caring staff are critical to our mission, and we have invested resources to ensure Providence is an Employer of Choice including expanding benefits, compensation, and professional development offerings as well as targeted engagement with staff at all levels. Despite a prolonged national workforce crisis, we are gaining traction in our recruiting, training, and retaining of high-quality employees.

We are actively engaged in efforts to create stronger relationships with community partners and on social media to discuss experiences of people with disabilities and seek better inclusion and outcomes, and to spread the voices of our advocates to a larger audience.

Finally, last year we began a rebranding process to better reflect our person-centered, community-focused approach. Our first step was a change in our name to Providence of Maryland, Inc. DBA "Providence," dropping "Center" to better reflect the work that happens every day to support people in their community.

Moving forward with purpose on our strategic goals is part of how we show up at Providence. Your continued support has helped us become a better, smarter organization that is well positioned to support people to live their best lives today and into the future.

We are very grateful for your ongoing investment to advance our mission. Together, with your help, we see great things for Providence, for the people we support, and for our community.

Sincerely,

A handwritten signature in black ink that reads "Karen Adams-Gilchrist".

Karen Adams-Gilchrist
President and CEO

A handwritten signature in black ink that reads "F. P. (Rick) Hunsicker".

Rick Hunsicker
Chair, Board of Directors

Our Mission

Our mission is to support people with intellectual and developmental disabilities to discover and live their best lives.

Our Vision

Our vision is that all people will have the opportunity to lead meaningful lives with real opportunities to grow and contribute to their communities.

Our Values

People-first: Every step is driven by the person and unique to the person.

Community: Is meant for every person.

Relationships: Real connections. Real experiences. Real expectations.

Accountability: Doing the right things for the right reasons - every single day.

Our Beliefs

We are motivated by the following beliefs:

- **We believe** that all people can be contributing and engaged members of their communities.
- **We believe** that, with the right support, all people can work in meaningful jobs, earn competitive wages, and contribute to the world around them.
- **We believe** that community is meant for every person, regardless of their ability, and every person should be afforded the opportunity to live, learn, work and play in their community.
- **We believe** that our Direct Support staff is the foundation of our work.

Since 1961 Providence has worked alongside people to discover and live their best lives.

Providence is licensed to serve Maryland's Central, Southern and Eastern Shore counties. Our highly trained Direct Support staff is the foundation of our work, and we strive to be an Employer of Choice, ensuring every person we support has access to excellent staff. Everything we do is centered around each person and their interests.

Our Career Services team connects people to meaningful jobs with competitive pay. We work with each person who wants a career to build the skills they need to be successful, and we partner with area businesses for jobs, volunteer opportunities and paid internships that are a win-win for both employer and employee.

People who want to pursue experiences of their choosing turn to Providence. Working alongside our staff, they explore their own interests and what is important to them in their community.



How we show up...

SUPPORTING PEOPLE TO LIVE THEIR BEST LIFE

- 271 People supported by Providence
- 3 New services licensed by DDA*, including residential
- 11 New counties added to our geographic footprint
- 30 People increased their self-advocacy skills and participation
- 3 Issues of Embrace Our Awesome Power e-magazine published by 4 self-advocates



EMPLOYER OF CHOICE

- 102 Staff
- 64 Employees with Providence for 5+ years
- 41 New hires this year
- 32.5 Hours of training for each new employee
- 10 Employees benefitting from Providence Taylor Comport Scholarship and Professional Development Fund

CAREER SERVICES

- 69 People employed in the community
- 73 Employer partners
- 7 New employer partners



FUNDRAISING & COMMUNITY OUTREACH

- 118 New donors
- 29% Donors giving two or more gifts
- 70% Grant applications awarded

For 61 years Providence has supported people in Anne Arundel County. This year we were granted additional licensing by the State to provide an expanded array of services in 11 additional counties, including residential services. This allowed us to begin pursuing new opportunities that both enhance and expand not only the support we provide to people, but also the number of people we support, as evidenced by our merger negotiations with a residential provider in Charles County, as well as the expansion of our Healthy Minds, Healthy Lives initiative, supporting the mental health needs of the people we support. We also increased our outreach efforts to students getting ready to graduate from their high school special education programs.

Through your continued generosity we are diligently moving to leverage these opportunities into additional services for more people, to increase our transition to community-based supports, and to build and grow our strategic partnerships.

* Developmental Disabilities Administration

How We Show Up

Building strong relationships...

Every person is unique. The same is true for the type and amount of support a person may need to live their best life. At our Jean Bradbury and Cloverleaf community locations, dedicated Direct Support Professionals (DSPs) show up every day to work alongside with people who require different levels of support. One of those DSPs is Ginika Udekwe.

Ginika has a special bond with Jeffrey. When he hears Ginika's voice, Jeffrey, who has a visual impairment, immediately recognizes her voice, and knows she is there for him. Jeffrey began receiving supports from Providence after years of receiving supports in an institution. "When Jeffrey came to us, it was hard for him to trust someone," Ginika explains. "At first, I helped him with every single thing, but as he became comfortable with me, he started showing me all the things he feels confident doing on his own. Every day I learn a little more about him."

When Jeffrey and Ginika first started working together there were some very challenging days. Those days are much less frequent now that Ginika and Jeffrey have built such a strong relationship. "Sometimes a person struggles with their surroundings, but what they actually lack is love," she says. "And when the right staff works with them, they open up, and their real character comes out." Jeffrey likes visiting Providence's Sensory Room, where he listens to music and can hum along. He also enjoys going out for lunch with Ginika. "My relationship with him has grown, and that always makes me happy."

Even though Ginika works primarily with Jeffrey, an entire team is at work. "Working as a team, I believe, helps the people we support," says Ginika. "With the team, Jeffrey is more comfortable when I'm not there; it's easier on him."

"It's very fulfilling work, knowing that someone is counting on you to show up and be there for them. When you support someone, it's good for them. It's good for you too. Working at Providence is more like family. They're here for you in the good times, in the bad times. They support you."



"Every day here is a memorable day for me." – Ginika Udekwe

Paying it forward...

When Nakisha “Kisha” Dean learned of her son’s disabilities when he was 18-months old, she began thinking about how her son’s life would look as he got older and grew into adulthood. A friend suggested she look into working at Providence. That was eight years ago.

“I love it,” says Kisha. “I just wanted to make a change in someone else’s life, because I hoped someone will do that for my son one day.”

Through Kisha’s work and the relationships she is developing, Kisha is making a difference every day for the people she supports. Cassie loves puzzles so, when they are not working through their curriculum of learning and building skills, Kisha uses their puzzle time to build relationships, share stories, and work together with a group of friends toward a common goal. She even set up a special table for this quality time, and other people we support are now working with them on the puzzles. Brian looks forward to his experiences in his community with Kisha. “We’ll go out shopping. I often treat Brian to lunch,” she adds.

Kisha wants everyone we support at Providence to know she is there for them. “Sometimes, just greeting people with a hello, a good morning with their name — it just makes someone’s day,” she says. “I make it my choice to go and speak to everyone. They know my name, my voice, my face, and they know if there’s anything that’s wrong, they can come to me. I make sure they understand that I’m not here for a paycheck. That’s not why I’m here. I’m here for them.”

***“What it takes to work here:
Patience. A warm heart. Kindness.
And a great sense of creativity.”
– Nakisha Dean***



People Supporting People

How You Can Show Up...

Recruiting. Our Direct Support Staff (DSPs) are the foundation of our work. Encourage anyone interested in a career at Providence to apply.

Work here. If you have what it takes to work as a DSP; if you are ready to work alongside someone to support them to live their best life, come work for Providence.

Volunteer. From helping in the greenhouses or pottery studio, to employment preparation and more, there are so many different ways to share your talents and expertise. Just call and ask!

Become an employer partner. Join our growing list of community businesses who benefit from our supported workforce and volunteers.

Share our story. Follow us on social media and share our stories with your friends and associates.

Give. Your donations help bridge the gap between government-funded support and the actual cost of providing individualized support. When you give generously, you open up a world of possibilities for the people we support to live their best lives.

How will you show up?



Having Fun Working Hard...

A local restaurant owner reached out to see if Providence's greenhouses could provide him with fresh cut organic basil. While we didn't have any basil at the time for Cafe Mezzanotte, an icon in Anne Arundel County's restaurant community for 30 years, we were ready to help Steven find a job that he loved, and where he would be valued. Our Career Services team works tirelessly to work alongside people we support who are looking for work and employers seeking the right employee. Providence reached out to Owner and Executive Chef Kosmas "Tommie" Koukoulis with a proposal: we would pay Steven for a short internship to see if Steven and the Cafe Mezzanotte staff liked working together.

In addition to focusing on local and sustainably sourced Italian cooking, Owner and Executive Chef Tommie points to his staff as a primary reason for Café Mezzanotte's longevity. Asked what qualities he looks for in his employees, Tommie doesn't hesitate. "Honest. Hardworking. Humble. Most important is a positive attitude; that's something we can't teach."

"Steven has a great attitude," Tommie adds. "He's a joy!" Steven may be a quiet individual, but he's an observer, a listener, detail oriented, and a creature of habit. "We call him Steady Eddie," says Steven's mom. "He's extremely thoughtful and compassionate." Tommie agrees. "Working with Steven is super easy," adding that he would like to teach Steven how to make pasta when he's ready.

When the internship ended Tommie hired Steven to join the team. Working 15-20 hours a week, Steven does many things in his job, but his favorite task is washing dishes. "I like cleaning them," he says. "I like the people too." Handwritten on his first paycheck were the words "Welcome to The Team!"

Steven is supported by Ashley, his Employment Consultant. "Ashley has been very invested in Steven," says Steven's mom. "He loves his job. Every day when he comes home, he has a smile on his face."

Steven truly believes the secret to having a good job like his is to "work hard and have fun." Supporting Steven and hard-working, fun-loving people like him is how we show up.

"The little bit of investment to work with Providence pays back dividends in ways that you can't always quantify, but it definitely pays them back."

— Tommie Koukoulis, Cafe Mezzanotte



Manager Matt Pharr, Steven, and Owner Tommie Koukoulis of Cafe Mezzanotte

Hard at Work and Having Fun!

Welcome to The Team!

My involvement has evolved...

Robert "Rob" Manigold had a rewarding career as a Vice President of Human Resources and Administration for ARINC in Annapolis. His duties included dispensing ARINC's corporate goodwill to local and national charities through donations and fundraising efforts. Providence was grateful to be one of the recipients of that goodwill. "I've never missed a golf tournament in the last 25 years," he says, thinking back on the many years the ARINC team showed up for Providence.

After retiring, a colleague who was on the Providence Board of Directors asked Rob to help us by putting his HR expertise to use in a nationwide search for a new CEO, which brought Karen Adams-Gilchrist to us almost seven years ago, "and we couldn't be luckier." When his work was done, Rob was invited to join the board. "And that's when the real fun began."

Over the years Rob has showed up for us time and again. In addition to helping find a new CEO, Rob's leadership on the board helped bring attention to the need for streamlining our transportation operations, and successfully navigating through the tough financial challenges brought on by the pandemic. A board member for seven years, he has been a part of the Real Estate Task Force, helped develop 401K options, and currently serves on three different committees in addition to being Board Secretary. In short, he's made and continues to make a tremendous difference.

"It keeps my head in the game from a business perspective. I love this organization. I love the people. I love what we do for people," Rob beams. "And if you read our mission statement carefully, we are really doing what we set out to do. It's such a well-managed operation."

One of our strategic goals is to expand our footprint and range of services offered, and Rob helped us as a board liaison for the affiliation and merger agreement with Charles County HARC. "It's been rewarding working closely with my fellow board members and watching this amazing management team bring our mission to life. I've learned a tremendous amount from them."

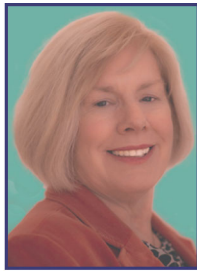
"There are a lot of people who need our support," Rob adds. "Support to get acclimated into their community. Support in living their best life – a fruitful, joyful, meaningful life. And I'll tell you, it is very impressive what the Providence team accomplishes. It's heartwarming to see what we do for people at all levels. I feel extremely proud to be a part of Providence, and I'm happy I can contribute any way I can."



"It's just part of my life now. It's quite the labor of love." – Robert Manigold



F. P. "Rick" Hunsicker Jr.
Retired



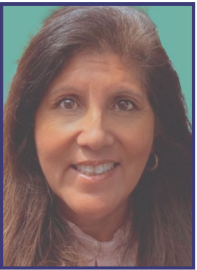
Mary Ellen Tuma
*Director of Food and
Nutrition Services
Luminis Health Anne
Arundel Medical Center*



Julie Natoli
*Principal and Chief
Investment and Risk
Officer, The Brick
Companies*



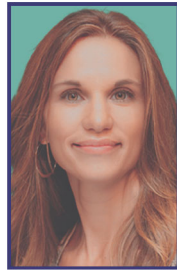
Rob Manigold
Retired



Marietta Dunn
*Partner, JPAR Real Estate
Maryland Living*



James K. "Jay" Eichelberger,
*CFP®, AIF®
Managing Director,
Wealthspire Advisors*



Amy Guerke
*Principal,
Ruth Parker
Eason School*



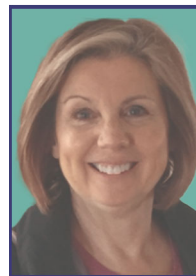
Megan Keller
Self-Advocate



Delegate Nicholas "Nic" Kipke
*Maryland House of Delegates
Vice President, Reps & Associates*



Jeff Kirby
CEO, Superior SoftWash



Lynn Zephir
*Community Volunteer
and Parent*

Providence of Maryland, Inc. is a 501(c)(3) non-profit organization registered in the state of Maryland to support people with intellectual and developmental disabilities. It is with the support from our donors and community partners that we can help people to discover and live their best lives in their communities.

Thank you for your investment in the people we work with, their families and in communities throughout Maryland.

For more information on ways to support our mission, call our Community Relations Department at 443-776-1967.

Board of Directors

OFFICERS

F. P. "Rick" Hunsicker, Jr., *Chair*
Mary Ellen Tuma, *Vice Chair*
Julie Natoli, *Treasurer*
Rob Manigold, *Secretary*

MEMBERS

Marietta Dunn
James K. "Jay" Eichelberger
Amy Guerke
Megan Keller
Delegate Nicholas "Nic" Kipke
Jeff Kirby
Lynn Zephir

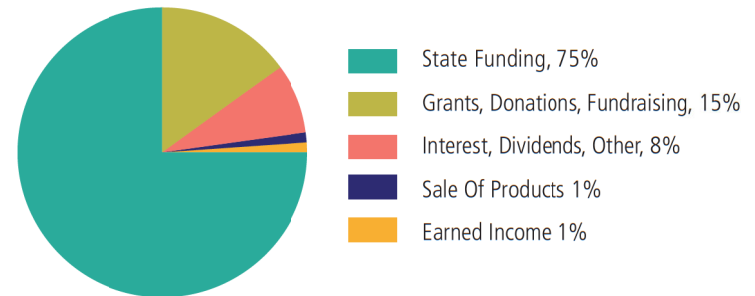
Making a Difference

Financial Review

While government sources provide some of the revenue needed for us to provide support, the contributions from our donor family make the difference that allows to support people to discover and live their best lives both now and for years to come.

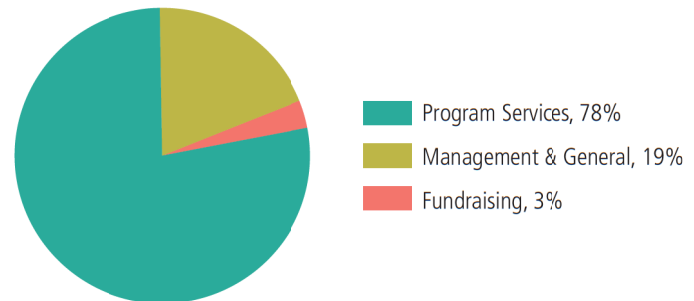
REVENUE AND SUPPORT

STATE FUNDING	\$6,254,090
GRANTS, DONATIONS, FUNDRAISING	\$1,228,852
INTEREST, DIVIDENDS, OTHER	\$661,372
SALE OF PRODUCTS	\$123,666
RENTAL INCOME	\$86,744
TOTAL	\$8,354,724



EXPENDITURES

PROGRAM SERVICES	\$5,920,080
MANAGEMENT & GENERAL	\$1,453,177
FUNDRAISING	\$239,954
TOTAL	\$7,613,211
GROSS PROFIT	\$741,513
NET REALIZED / UNREALIZED GAIN (LOSS) ON INVESTMENTS	\$(793,315)
RECOVERY RELIEF FUNDS	\$962,027
NET PROFIT	\$910,225



Donors*

CORPORATIONS & FOUNDATIONS

Champions \$25,000+

Anne Arundel County
Jesse & Hertha Adams
Charitable Trust
Maryland Community Health
Resources Commission

Leaders: \$10,000+

BGE
Reliable Contracting Company, Inc.
Wealthspire Advisors

Ambassadors: \$5,000+

Community Foundation of
Anne Arundel County
Craftsmen Developers, LLC
Danny's Day Foundation
David O. and Martha G.
Campbell Family Foundation
Koons Toyota of Annapolis
Moran Insurance
O'Donnell Vein & Laser
Peggy A. Baldwin Revocable Trust
PNC Bank
PNC Foundation
Sandy Spring Bank
The Benevity Community
Impact Fund

Advocates: \$2,500+

Caruso Homes Inc.
Chaney Enterprises
Chartwell Foundation, Inc.
Chesapeake Employers Insurance
Kelly Insurance & Investments I
Kelly Financial Advisors
The Arc Maryland
The Traffic Group, Inc.

Partners: \$1,000+

ACG Systems, Inc.
Bay Walls, Inc.
Creston G. and Betty Jane
Tate Foundation

Critical Systems Schneider Electric
Decker Global Wealth
Enterprise Fleet Management
Enterprise Holdings Foundation
GW Carr Contracting Inc.
Hyatt Commercial
Knights of Columbus St. Andrew
by the Bay #11552
Koch Family Foundation, Inc.
Kurtz Beach, Ltd.
Liberty Mutual
Network for Good
Priceless Industries, Inc
Rogers-Wilbur Foundation, Inc.
RT Specialty
Selective Insurance Company
of America
St. Christopher By The Sea
University of Delaware
Volvo Cars Annapolis

Patrons: \$500+

Annapolis Civitan Club #177
Cameron Group
Derby-Masson Family Fund at the
Baltimore Community Foundation
Fifth Generation
Kalas Funeral Home
Liquified Creative
Naka, Huttar & Oldhouser, LLP
Naval Bagels
Provincial East Inc.
Schuh Family Foundation
Shannon Associates
Suzanne Rindfleisch, D.O.
and Associates, P.A.
The Belle Grove Corporation
The Brick Companies Foundation
The Joseph Mullan Co.
The Loughlin Management
Group, Inc.
Travelers Insurance
Treffer Appraisal Group

Friends: \$250+

Agency Insurance Company of MD
Baltimore Truck Center
Bella's Liquors
First Choice Property Management
Imperial PFS
John T. Baldwin Irrevocable Trust
Kiss My Glass
Kite Technology Group

Peroutka, Miller, Klima & Peters, P.A.
Severn Savings Bank
United Way of Southwestern
Pennsylvania

Supporters: Up to \$249

Amazon Smile
America's Charities, Inc.
Be Sure Fund Bowie State
Fiore Contracting, Inc.
FrontStream
Iroquois Group
Kroeger Electric Company
Laura's Eyes Photography
Mark Wurzbacher & Associates
Maryland Charity Campaign
Port Tack Wine & Spirits
Womens Fellowship of
First Presbyterian Church

INDIVIDUALS

Leaders: \$10,000+

Mrs. Thomas I. Baldwin

Ambassadors: \$5,000+

Ms. Patricia Baldwin
Mr. and Mrs. Rob Brady
Mr. and Mrs. John Belcher
Mr. Rocky Cintron
Mr. and Mrs. William Doukas
Mr. and Mrs. Frederick P. Hunsicker
Mr. Douglas Lashley
Mr. Aubrey McRoberts
Mrs. George Wohlgemuth

Advocates: \$2,500+

Ms. Karen Adams-Gilchrist
Mr. and Mrs. Michael Baldwin
Mr. J. Robert Bradshaw
Mr. and Mrs. Peter Chambliss
Dr. and Mrs. Rob Daly
Mr. and Mrs. Chris
Diamondidis
Ms. Marietta Dunn
Mr. and Dr. James Eichelberger
Mr. Ronald W. Johnson
Mr. Robert Manigold
Mr. and Mrs. Mark
Muckelbauer

Partners: \$1,000+

Mr. and Mrs. Ray Allen
Anonymous
Mr. and Mrs. Charles Bagley, IV Esq.
Mr. and Mrs. Jay Baldwin
Mr. and Mrs. William E. Baldwin III
Mr. and Mrs. Chris Beattie
Mr. and Mrs. Richard Briemann
Dr. and Mrs. James Chappell
Mr. and Mrs. Anthony Cornish
Ms. Sherry Cushman
Mr. and Mrs. Sean Doordan
Ms. Chantal Dukette
Mr. and Mrs. Michael Gomez
Mr. and Mrs. John W. Gosnell
Mr. and Mrs. Bill Greenfield
Mr. and Mrs. John Hardig
Mr. Gregory Linderman
Mr. Matthew Mace
Ms. Cheryl Malone
Mr. and Mrs. Wade Mayberry
Mr. Thomas McQuillan
Mr. and Mrs. John R. Mulkey
Ms. Julie Natoli
Mr. and Mrs. Michael J.
Prendergast
Ms. Michelle Russell
Mr. and Mrs. Rob Scrivener
Mr. and Mrs. Michael Stamper
Mr. and Mrs. Evan Thalenberg
Capt. Robin Bosworth and
Ms. Mary Ellen Tuma
Mr. and Mrs. Charles S. Walsh
Mr. and Mrs. Thomas Weigand
Mr. and Mrs. Ron Wyatt
Mr. and Mrs. William Zephir

Patrons: \$500+

Ms. Kelly Arslanian
Mr. William P. Beatson Jr.
Mr. Michael Beattie
Mr. and Mrs. Ben Borchelt
Mr. and Mrs. Troy Brewer
Mrs. Judith Brick
Mr. and Mrs. Craig Bullen
Mr. and Mrs. Stephen Bupp
Mr. Jason Campbell
Ms. Patty Cecil
Ms. Carol Clemmens
Mr. and Mrs. John Dixon
Mr. and Mrs. Martin Doordan
Mr. and Mrs. R. Scott Gregory
Mr. and Mrs. James Griesser

* Gift information reflects activity during FY22, which covers the period from 7/1/21 – 6/30/22.

Mr. Patrick Harvey
 Mr. Michael Kelly II
 Delegate and Mrs. Nicholas
 "Nic" Kipke
 Mr. John Luce
 Ms. Joan Miller
 Mr. and Mrs. Robert Pelrine
 Ms. Erica Rodriguez
 Mr. and Mrs. Gregg Ruschell
 Mr. Alex Schmidt
 Ms. Pamela Sellers
 Mr. Martin Snider
 Mr. and Mrs. John B. Wheeler
 Mr. and Mrs. Robert Worden

Friends: \$250+

Mr. and Mrs. Warren Adams
 Mr. Terry Artz
 Mr. and Mrs. Richard Beattie
 Mr. and Mrs. William Bither
 Mr. and Mrs. Doug Bradford
 Mr. and Mrs. Bob Carrier
 Ms. Kirsten Chapman
 Mr. and Mrs. Steven
 Chavoustie
 Mr. and Mrs. Allan Comport
 Mr. and Mrs. Joel Core
 Mr. and Mrs. Erik Daly
 Ms. Jill Depaola
 Mr. and Mrs. Russ Devoe
 Mr. and Mrs. Douglas Drenner
 Mr. Michael DeStefano and
 Ms. Molly Driver
 Mr. Eric Flaminio
 Mrs. Kristina George
 Ms. Jessica Gibson
 Mr. Kevin Gibson
 Mr. and Mrs. Michael Gombatz
 Ms. Chardon Gray
 Mr. and Mrs. Anthony F.
 Grimaldi
 Mr. and Mrs. Randy Habeck
 Mr. and Mrs. John Harper
 Ms. Bethany Hobbs
 Ms. Wendy Hooper
 Mr. and Mrs. Henry Hopkins
 Mr. and Mrs. Eric Hunsicker
 Mr. and Mrs. William Jaeger
 Ms. Nancy Griggs Johnson
 Ms. Janet Kelley
 Ms. Alexa Kelly
 Ms. Ellen Kleinknecht
 Mr. Douglas Kurdziel
 Mr. Daniel Laughlin
 Ms. Sue Meyer
 Mr. and Mrs. Lee Meyers
 Mr. and Mrs. James Millford

Mr. and Mrs. Craig Morrell
 Mr. and Mrs. James Morrow
 Mr. Edwin Moses
 Mr. and Mrs. Joseph Natoli
 Mr. Vinnie Odell
 Ms. Emily O'Meara
 Mr. Patrick Outlaw
 Mr. and Mrs. Steven Patterson
 Ms. Nicole Pedersen
 Mr. and Mrs. Stephen
 Peroutka
 Mr. and Mrs. Dave
 Hesselberth-Plunkert
 Mr. and Mrs. David Reed
 Ms. Mary Anne Reuschling
 Ms. Kathy Seering
 Ms. Stephanie Sera
 Mr. and Mrs. Charles Shaeffer
 Mr. and Mrs. Joseph P.
 Saldone
 Mr. and Mrs. John Stamato
 Ms. Lesley Szynal
 Mr. and Mrs. Glen Terrell
 Ms. Pamela Varipapa
 Mr. Steve Wacker
 Mr. and Mrs. John Ward
 Ms. Anne Warpinski
 Ms. Nikki Weaver
 Mr. Austin Wern
 Mr. and Mrs. Edward S. Worff

Supporters: Up to \$249

Ms. Marilyn Adams
 Mrs. Ann Albrecht
 Ms. Laura Anderson
 Mr. and Mrs. Peter P. Andre
 Mrs. Pamela Arey
 Mr. and Mrs. Frank J.
 Arsenault
 Mrs. Belva Barbalace
 Mr. and Mrs. Gary C. Beach
 Mr. and Mrs. Charles Becker Jr.
 Mr. Joseph Bither
 Ms. Mary Lou Bloom
 Mr. and Mrs. Wayne Bonn
 Mr. John Bousum
 Mr. Christopher S. Boyce
 Mr. and Mrs. Frank R. Brennan
 Ms. Angela Brooks
 Ms. Bertina Brown
 Ms. Susan Brown
 Mr. and Mrs. Peter J. Bruha
 Ms. Roni Bruner
 Mrs. Donna Buono
 Mr. Robert Campbell
 Mr. and Mrs. Andrew Capaci
 Mr. and Mrs. Lawrence Castro

Mr. Marcus Chacona
 Mr. and Mrs. Kevin Cline
 Mr. and Mrs. Daniel Collins
 Mr. and Mrs. James Colombo
 Ms. Jane Conrad
 Mr. William F. Cornelius Jr.
 Mr. and Mrs. James Crafton
 Mrs. Linda Crawford
 Ms. Melissa Crowner
 Mr. Paul Currie
 Mr. and Mrs. Jim DeCarlo
 Mr. Richard DeMoss
 Mr. and Mrs. John J. Denice
 Ms. Alexandra Deutsch
 Mrs. Crystal Doolittle
 Mr. and Mrs. George Dubina
 Mr. David Tessieri and
 Ms. Pam Eberhardt
 Dr. and Mrs. Allen C. Egloff
 Mr. Eli Eisenberg
 Ms. Kim Eisenhart
 Mr. and Mrs. Willard G. Eldred
 Executive Department of
 the Governor of Maryland
 Mr. William R. Fleming III
 Ms. Nancy Galetsky
 Capt. and CDR Thomas P.
 Gallagher III
 Mr. Frederick Galloway
 Mr. and Mrs. Kip Galloway
 Mr. and Mrs. C. Herbert
 Gilliland
 Ms. Sally Goodall
 Ms. Dorothy Goodson
 Ms. Cynthia Gray
 Ms. Linda Greene
 Mr. and Mrs. Fred Hall
 Mrs. Kathy Hargett
 Mr. and Mrs. Thurman Harper
 Mrs. Jacqueline Harris-Harrell
 Mr. and Mrs. James Harrison
 Ms. Margaret Harvey
 Ms. Sharon E. Harvey
 Mr. and Mrs. Robert D. Hauck
 Ms. Maureen Hervada
 Mr. William W. Hill
 Mr. and Mrs. Don Hillier
 Ms. Anna Hoffman
 Ms. Jessica Holman
 Ms. Annette Hooper
 Mr. Brian Hoover
 Dr. Linda J. Jacobs
 Mr. and Mrs. Frederic J. Jacoby
 Mr. and Mrs. Scott Jay
 Mr. and Mrs. Del Jenstrom
 Mr. and Mrs. Arthur Johnson
 Ms. Carol Johnson
 Ms. Vivien Johnson

Mr. and Mrs. Christopher C.
 Jones
 Ms. Mary Pat Justice
 Ms. Aya Kakeda
 Ms. Jerri Kamicker
 Mr. and Mrs. Peter E. Katz
 Ms. Eleanor Keating
 Ms. Megan Keller
 Ms. Mary C. Kelley
 Ms. Ahmna Khan
 Ms. Margaret Kitlas
 Mrs. Jerome W. Klasmeier
 Ms. Amanda Knudsen
 Ms. Rhonda Kumer
 Ms. Cathleen Lerner-Beckett
 Mr. Calvin Lee
 Ms. Kirsten Lee
 Ms. Melanie Lee
 Ms. Emily Levy
 Mr. David Demers and
 Ms. Patricia Lilek
 Mr. Todd Liller
 Ms. Iris Littig
 Mr. and Mrs. Robby Lookk
 Ms. Delia Lopez
 Ms. Kristine Lopez
 Dr. and Mrs. Allan S. Love
 Mr. Jay D. Mahaffey
 Ms. Rhonda Malkowski
 Ms. Rosemarie Malloy
 The Honorable Judge
 Michael Malone
 Mr. and Mrs. Scott E Marx
 Ms. JoAnne Maurer
 Mr. and Mrs. George C.
 McCully
 Mr. and Mrs. John
 McDonough
 Mr. and Mrs. Mike McFarland
 Mr. and Mrs. John McKernan
 Mr. James McKittrick
 Mr. J Kent McNew
 Ms. Erin McNaboe
 Ms. Sherry Meredith
 Mr. and Mrs. Bruce C. Mitchell
 Dr. Edward H. Mitchell
 Ms. Gina Mitchell
 Mrs. Sharon K. Molander
 Mr. and Mrs. Donald
 Montgomery
 Ms. Maxine H. Moran
 Mr. and Mrs. Clyde Morehead
 Ms. Connie J. Morris
 Ms. Karen Mulinari
 Mr. and Mrs. James Murphy
 Ms. Judith Murphy
 Ms. Julia Nagy
 Ms. Elizabeth Neafsey

Mr. and Mrs. David Newton
 Ms. Janet Niblock
 Mr. and Mrs. Thomas Nolan Jr.
 Mr. Sean Odonovan
 Mr. and Mrs. Grover Outland
 Ms. Mary Palko
 Mr. and Mrs. Steven E. Parker
 Mr. and Mrs. Douglas F.
 Parrillo
 Ms. April Patel
 Ms. Linda Payne
 Mr. and Mrs. M. H. Payton
 Mr. Mark Pfister Sr.
 Mr. and Mrs. Paul Plummer
 Mr. Teddy Pons
 Mr. and Mrs. Eliot D. M.
 Powell
 Ms. Kimberly Reibenstein
 Mr. and Mrs. David Scott Rey
 Ms. Beverly Ritz
 Mrs. Patricia Rogers
 Mr. Artem Romanchak
 Mr. and Mrs. James W. Ruppel
 Mr. and Mrs. Jim Sayler
 Ms. Camryn Scaffie
 Ms. Linda Schermerhorn
 Mr. Tyler Schultz
 Mr. and Mrs. Joseph Scoppa
 Ms. Loretta Seal
 Ms. Robin Seaton
 Ms. Ligya Secundo
 Mr. Rob Sell
 Ms. Kelly Shipley
 Mrs. Barbara Smith
 Mr. Richard Smith
 Mr. and Mrs. Russell A. Smith
 Mr. and Mrs. William D. Smith
 Mr. David Southwick
 Mr. and Mrs. F. M. Sovaiako
 Mr. and Mrs. Don W. Stanfill
 Mr. and Mrs. Chris Stern
 Mr. and Mrs. Rob Strouse
 Mr. and Mrs. Michael
 Superczynski
 Mr. and Mrs. Kevin Swartz
 Mr. and Mrs. Michael Szuba
 Ms. Gail Pizie and
 Ms. Jessica Tessieri
 Mrs. Charlene Tomak
 Ms. Rita Treadwell
 Ms. Cynthia Trimmer
 Mr. and Mrs. Stephen Troy
 Mr. and Mrs. Roland Van Dyke
 Ms. Lyn Vencus
 Mr. and Mrs. James G. Walters
 Mr. and Mrs. Kenneth Watson
 Ms. Laura Weidner
 Mrs. Joan Weingartner

Mr. and Mrs. Jim White
Ms. Colleen Winans
Mr. and Mrs. Paul Wright III
Ms. Heidi Younger
Mr. and Mrs. Dan Zeitlin
Mr. and Mrs. David Zillig

IN MEMORY OF

In Memory of Robert Brick
Mrs. Judith Brick

In Memory of Jimmy Burke
Ms. Roni Bruner
Ms. Pamela Sellers
Ms. Laura Weidner

In Memory of Taylor Comport
Bay Walls, Inc.
Mr. and Mrs. Chris Beattie
Mr. Michael Beattie
Mr. and Mrs. Richard Beattie
Mr. John Bousum
Mr. Jason Campbell
Mr. Robert Campbell
Mr. and Mrs. Steven Chavoustie
Mr. Marcus Chacona
Mr. and Mrs. Kevin Cline
Ms. Alexandra Deutsch
Ms. Jessica Gibson
Mr. and Mrs. Michael Gomez
Mr. and Mrs. Bill Greenfield
Ms. Maureen Hervada
Mr. and Mrs. Joyce and Dave Hesselberth-Plunkert
Ms. Wendy Hooper
Ms. Carol Johnson
Ms. Aya Kakeda
Ms. Jerri Kamicker
Ms. Alexa Kelly
Ms. Amanda Knudsen
Mr. Douglas Kurdziel
Ms. Emily Levy
Mr. James McKittrick
Ms. Erin McNaboe
Mr. and Mrs. Donald Montgomery
Ms. Karen Mulinari
Ms. Julia Nagy
Mr. and Mrs. David Newton
Ms. Janet Niblock
Mr. Sean Odonovan
Mr. Patrick Outlaw
Mr. and Mrs. Robert Pelrine
Mr. Teddy Pons
Ms. Kimberly Reibenstein
Mr. and Mrs. David Scott Rey

Ms. Beverly Ritz
Mr. and Mrs. Gregg and Amy Ruschell
Mr. and Mrs. Jim Saylor
Ms. Camryn Scaffie
Shannon Associates
Mr. Martin Snider
Mr. and Mrs. Chris Stern
Mr. and Mrs. Rob Strouse
Ms. Lesley Szynal
Ms. Lyn Vencus
Mr. and Mrs. Charles S. Walsh
Mr. Austin Wern
Mr. and Mrs. Jim White
Ms. Colleen Winans
Ms. Heidi Younger

In Memory of Dawn Corbin
Mr. and Mrs. Edward S. Worff

In Memory of Jimmy Edwards
Ms. April Patel

In Memory of Ann Prendergast
Mr. and Mrs. Michael J. Prendergast

In Memory of Carol Ann Shea
Mr. Tyler Schultz
Mr. and Mrs. Glen Terrell

In Memory of Isabel Tessieri
Mr. and Mrs. James Colombo
Mr. David Tessieri and Ms. Pam Eberhardt
Mr. Eli Eisenberg
Ms. Annette Hooper
Mr. Brian Hoover
Ms. Eleanor Keating
Ms. Elizabeth Neafsey
Ms. Linda Schermerhorn
Ms. Gail Pizie and Ms. Jessica Tessieri
Mr. Steve Wacker
Mr. and Mrs. James G. Walters

In Memory of Rosalie Zillig
Mr. and Mrs. David Zillig

IN HONOR OF

In Honor of Wanda Lee Coates and Judy Neal
Ms. Kirsten Chapman

In Honor of Andrew and Alex Jones
Mr. and Mrs. Michael Gombatz

In Honor of Cheryl & Becky Malone
Mr. and Mrs. Kevin Swartz

In Honor of Robert E. and Elaine Manigold
Mr. Robert Manigold

In Honor of Sean McDonough
Mr. and Mrs. John McDonough

In Honor of Steven Patterson
Mr. Aubrey McRoberts

In Honor of Lisa Pizarro
Mrs. Linda Crawford

In Honor of C.G. Smith
Bella's Liquors

In Honor of Beverly Van Dyke
Mr. and Mrs. Roland Van Dyke

In Honor of Dillon and Carter Van Ordern
Mr. and Mrs. William D. Smith

In Honor of Taylor Wilson
Mr. and Mrs. Joseph Scoppa

In Honor Of Peggy Wohlgemuth
Mrs. George Wohlgemuth

IN KIND

Ace Hardware
Ace Hardware and Hearth Amalfi Coast
Mr. and Mrs. Jay Baldwin
Ms. Patricia Baldwin
Mr. and Mrs. William Bither
Ms. Mary Bowen
Mr. J. Robert Bradshaw
BSA Seafood
Mr. and Mrs. John Carson
Cellar Studio Jewelry
Dr. and Mrs. James Chappell
Chesapeake Bay Beach Club, LLC
Chesapeake Employers Insurance
Chick-fil-A
Christo's Discount Liquors
Ms. Sharon Corbett
Mr. and Mrs. Craig H. Decker
Ms. Nicole Pedersen
Mr. and Mrs. Chris Diamondidis
Ms. Marietta Dunn
Mrs. Kathy Hargett
Mr. and Mrs. Robert Hibbert
Hyatt Regency Chesapeake Bay Golf Resort, Spa and Marina
Ms. Hannah Kaufman

Kelly Insurance & Investments I
Kelly Financial Advisors
Mr. and Mrs. David Lamar
Ms. Cathleen Larnier-Beckett
Laura's Eyes Photography
Ms. JoAnne Maurer
Mr. and Mrs. Wade Mayberry
Metropolitan Kitchen and Lounge
Mr. and Mrs. Joseph Natoli
Ms. Julie Natoli
O'Donnell Vein & Laser
Pusser's Caribbean Grille
(Re)Focus Studio
Ripped Mussels
Romilo's
Ron George Jewelers
Mr. Mark Schramek
Ms. Kathy Seering
Ms. Carol Soutar
The Axe House Annapolis
The Drift Shop
The Grill at Quarterfield Station
The Maryland Corn Maze
Whiteford, Taylor, & Preston LLP
Zachary's Jewelers

HARVEST BASH COMMITTEE

Cathy Larnier-Beckett
Colleen Baldwin
Tricia Baldwin
Dave Chisholm
Kim Chappell
Tia Carson
Melissa Diamondidis
Karin Kraft
Nicole Pedersen
Cathy Stamper
Kathy Seering
Laura Weigmann

MORAN GOLF CLASSIC COMMITTEE

Marc Dorman
Rick Hunsicker
Matt Lehmann
Donna Moran
Mike Phillips

We Believe that every person should have equal opportunities to pursue whatever is important to them, to be engaged and accepted members of their community, to have a career of their choice and a network of relationships that they support and who supports them to live their best life. Providence exists to support people to make this a reality in their lives every day throughout Maryland.



Providence of Maryland, Inc.
930 Point Pleasant Road
Glen Burnie, MD 21060
410-766-2212
providencecenter.com