

# 2024

## ANNUAL REPORT



providence



Real Connections. Real Opportunities. Real Experiences.

# A Letter From Our President & CEO and Board Chair

Dear Friends,

We are pleased to present Providence of Maryland's 2024 annual report and to highlight the impact you are making on our mission and across our communities.

At the forefront are the contributions made each day by the men and women we support. People are living their best lives in their communities working, volunteering their time, enjoying and supporting restaurants and retailers, taking care of and pride in their homes, and accessing all the resources and opportunities around them. Sixty-nine local businesses and 15 nonprofits and area churches are benefitting from the dedicated and talented workforce that we support each day. Our self-advocates are using their voices to share their opinions and interests, meeting with their elected officials, taking part in advocacy conferences, and providing education to community members.

We are proud of our growth as an organization to deliver the best services for more people and their families, to build those community partnerships to support our work, and to deepen the talent of our incredible staff. We are in the final year of our current strategic plan and continue to focus on our core priorities to ensure the right team to deliver on our mission, to further develop our innovative and adaptive business model to provide personalized services in the community as much as possible, to increase our brand visibility and community awareness, and to build diverse and sustainable funding streams.

Looking forward, we plan to grow our footprint within the community, both strategically and person by person based on each person's goal for their life. To support that, we have started our real-time strategy process for the years 2026-2030 and beyond to ensure that how we operate across the organization aligns with our ideals for equity and inclusion for all.

This is an exciting time for the Providence family. We know how important your support was to our progress in 2024 and how vital your partnership will be in the future. Thank you for your support and for believing in our mission and in the people who count on us.

Sincerely,



Karen Adams-Gilchrist  
President & CEO



F.P. 'Rick' Hunsicker  
Board Chair



# Table of Contents



04.....	<b>Mission, Vision, Values, Beliefs</b>
05.....	<b>Our Impact</b>
06.....	<b>Our Stories</b>
10 .....	<b>Our Board</b>
13 .....	<b>How To Support</b>
14 .....	<b>Financial Review</b>
16 .....	<b>Donors</b>



# Mission and Vision

**Our mission, vision, values, and beliefs are our foundation and guide us in all that we do on behalf of the people we support, their families and advocates, those who partner with us in so many ways and the community at large.**

## Our Mission

Support people with intellectual and developmental disabilities to discover and live their best lives.

We are a leading non-profit supporting over 300 people in Maryland. Our goal is to provide a comprehensive mix of supports and services that are customized and specific to each person and their needs and goals through a person driven planning process. We are committed to supporting people within their community to advocate for and work toward the lives they want.

## Our Vision

All people will have the opportunity to lead meaningful lives with real opportunities to grow and contribute to their communities in ways that are important to them.

# Beliefs and Values

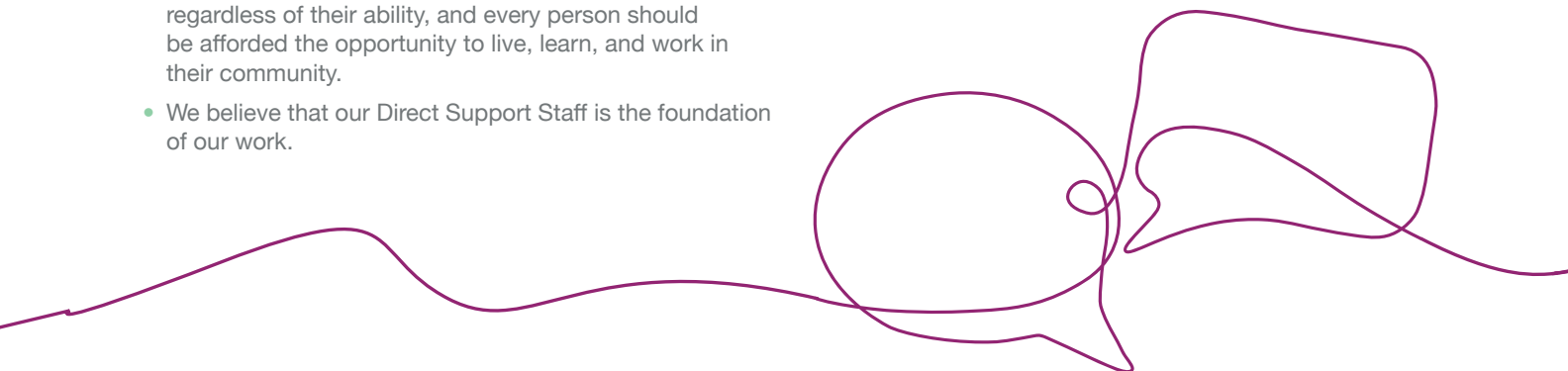
## Our Beliefs

At Providence, we are motivated by the following beliefs:

- We believe that all people can be contributing and engaged members of their communities.
- We believe that, with the right match, all people can work in meaningful jobs, earn competitive wages, and contribute to the world around them.
- We believe that community is meant for every person, regardless of their ability, and every person should be afforded the opportunity to live, learn, and work in their community.
- We believe that our Direct Support Staff is the foundation of our work.

## Our Values

- **People-first:** Every step is driven by the person and unique to the person.
- **Community:** Is meant for every person.
- **Relationships:** Connections, Experiences, Expectations.
- **Accountability:** Doing the right things for the right reasons; every day.



18  
People  
Volunteering  
With

15  
Organizations

71  
People Working In  
Community Jobs



88  
People

Participating in Self  
Advocacy Activities

64 YEARS  
Serving our  
Community

69  
Employer Partners

5,470  
Hours of Staff  
Training Provided

11  
Services  
& Supports Offered

Community Development Services  
Career Services  
Day Habilitation  
Community Living  
Behavioral Supports  
Personal Supports  
Supported Living  
Shared Living  
Environmental Assessments  
Environmental Modifications  
Assistive Technology

99 PEOPLE  
Participating in CDS  
& Other Community  
Based Services

323  
People Supported  
in Anne Arundel  
and Charles Counties

239  
Staff Members in  
Anne Arundel  
& Charles Counties

30 STAFF  
Enrolled in or Completed  
a Development Program in  
Partnership With AACC



323

Unique Stories  
of People We Support

\$860,819  
Raised for Providence in 2024



286,419  
Hours of Service  
Provided in 2024

Providence Pottery & Arts Studio  
and Greenhouses

\$171,312  
Product Sales  
in 2024



654 Unique  
Customers  
27 Classes Held  
19 Retail Outlets  
19 Community  
Partners

37  
People

Supported in 13 Community  
Living Settings



# Our Stories

Support for Providence comes in all shapes and sizes. Annual donations from individual and corporate donors, planned gifts, grants from community organizations and public entities, and gifts of time and expertise all make an impact. Every donor and every donation makes a difference and advances our mission.

## A Legacy of Support – The Jesse and Hertha Adams Charitable Trust

More than 20 years ago, the late Jesse Adams, a successful businessman, and his wife Hertha established the Jesse and Hertha Adams Charitable Trust to carry on their legacy of helping people in their community. Providence is very fortunate to be a beneficiary of the Jesse and Hertha Adams Charitable Trust along with a group of other nonprofits in the area. Over the years, the Trust has contributed almost \$2 million to support Providence's mission and it has touched almost every aspect of our organization with funds providing specialized technology, enhancements to our production businesses, and transportation. More recently, the Trust helped to establish and provides ongoing support for our Internship Program, which provides an important first step for people wanting competitive employment. Since we started the Internship Program, more than 100 internships have been offered providing people with opportunities to learn marketable skills and make important professional connections to advance their career journey. Many people have taken advantage of more than one internship opportunity and are proudly contributing to the workforce needs of businesses across the community.

**18** PEOPLE

employed as result of internship, either with same employer or hired based on marketable experience

### Types of Industries Supported

Government  
Parks and Recreation  
Retail  
Restaurant  
Specialty Services  
School/Childcare  
Hospitality

**27**

Businesses  
Benefitting

**OVER  
100**

Internships  
Since Inception



### Intern Profile: Haolin, Lake Waterford Park

Haolin is an intern at Lake Waterford Park through Providence's Internship Program. She has wanted a job since she graduated from high school but needed a little more hands-on experience to build her resume and to gain the confidence to seek out her first job.

Haolin started her internship at Lake Waterford Park in the fall of 2024, but her connection to the park started years ago when she went to summer camp there. It was that familiarity with the park and an atmosphere that Haolin enjoyed that made Lake Waterford the perfect place to explore employment.



## A Board Member's Gifts of Time and Talent – Gary Badgley

Just like financial contributions, the quiet donations of time and talent can have a profound impact on our mission as in the case of our Board of Directors. Providence is fortunate to have an amazing group of 15 dedicated board members who believe in and support our work and ensure that we are serving our community in the best possible way.

One such committed volunteer is Gary Badgley, who retired from the Providence Board at the end of fiscal year 2024. As Chair of the Charles County HARC Board, he joined our board through the merger of Charles County HARC into Providence in 2023, after more than 40 years of service to Charles County HARC and its Board.



100%  
Board  
Giving

Gary has also dedicated more than four decades of board service to another Charles County provider, Spring Dell, which partners with Providence to provide services during the workweek to people. When asked about his personal reason for supporting organizations like Providence, Gary explains it started with a Kiwanis meeting years ago when he heard a presentation about services. He was intrigued initially by what he heard we did for people and then quickly fell in love with our mission, the people we support and the staff who work alongside them as he became more intimately involved as a board member. Gary said, "There is so much good being done in these agencies and it is great to have played a small part in it for so many years. It has been a way for me to give back for all that I have been blessed with in my life."

Providence is fortunate that Gary has played a role in our work. His partnership, knowledge of his organization's services and understanding of the local market were instrumental to the merger, and ultimately to our organization's expansion to Charles County and growth in residential services. Gary worked tirelessly alongside our leadership and Board to ensure a seamless transition of Charles County HARC into Providence of Maryland. With Gary's contributions, and the support of his fellow board members, we were able to take an important strategic step for Providence.

Through the merger, Providence brought on an established team of amazing staff who are dedicated to supporting people to live their best lives in Charles County. We are proud of the work our team is doing each day, and proud of the contributions the people they support are making. Every day 35 men and women are taking care of and pride in their homes and are making contributions as engaged members of their communities. Thank you Gary, for your years of service.

Today, Haolin is doing an amazing job in her internship. She works three days a week, cleaning the office, collecting trash, mulching and planting. She is now working without the support of her Providence mentor and turns to Park Ranger Melissa if she has any questions or needs any help. She and Melissa have formed a close bond which, it turns out, also started years ago when Melissa was Haolin's camp counselor.

Haolin was shy when she started her internship. Over the past few months, she has become very social with her co-workers and park visitors and is confidently taking care of her responsibilities.



## PLANNED GIVING

**There are many ways to make a legacy gift that can support your family's financial plan and the mission of Providence at the same time.**

Bequests, Gifts from Retirement Plans, Required Minimum Distributions (RMD's), and Endowed Gifts are all ways you can incorporate charitable giving into your overall financial and estate planning. A conversation with your financial advisor is the best place to start, but you can also contact Providence for additional information at [giving@providenceofmaryland.org](mailto:giving@providenceofmaryland.org) or call the Development Office at 410-766-2212 x 110.

## One Family's "Why" Funds Professional Development – The Taylor Comport Fund

The Taylor Comport Scholarship and Professional Development Fund was created in 2020 by Allan and Sally Comport and their daughter Olivia, alongside Chuck Walsh and other dear friends, to remember their daughter Taylor and honor the Direct Support Professionals who worked with Taylor at Providence for thirteen years. Developing the fund was important to the family because, they feel "it is those team members who provide coaching, mentoring and care that bring Providence's mission to life."

In just 5 short years, Taylor's Fund has raised over \$70,000 from nearly 200 donors, which is due to the Comport Family and their close friends sharing their "Why." Providence staff became a huge part of their lives as they supported Taylor to live her best life—an impact that won't soon be forgotten. The Comports know firsthand that funding learning opportunities for staff to grow professionally and personally helps them provide the very best support to all of the people and families who count on Providence, which is why they continue to be involved and contribute generously through Taylor's Fund.

Thanks to the efforts of Allan and Sally, Olivia and her husband Mike, Chuck, and so many others, more and

more people are becoming aware of Providence's work and our impact. Since the fund was created, it has helped to fund Providence's partnership with Anne Arundel Community College to create a Professional Development program. Nineteen staff members have completed the program and several have been promoted to new roles with more responsibility, and other staff have also taken advantage of tuition assistance through Taylor's Fund.

The Comport Family are a shining example of how sharing your "Why" is critical to helping support Providence. Those impacted by our work are our best advocates in sharing our mission and case for support with our community. We cannot thank them enough for their efforts to provide opportunities for growth for our team. Providence President and CEO, Karen Adams-Gilchrist, said it perfectly: "Every gift to Taylor's Fund is an investment in our staff, our most valuable resource, and ultimately to Providence's mission. We are very proud to be a learning organization, and are grateful to the Comports, their friends and to every donor for investing in our team members' learning and growth so that we can do the very best for over 300 people and their families who count on us each day."







## Featured Staff Member: Chrissy Jenkins

Chrissy started her career with Providence in 2018 and has worked in multiple roles including Direct Support Professional (DSP) and Employment Mentor. Her favorite part about her work at Providence is engaging with the people we support. She says, “The people we work with are the foundation of the happiness that consumes me while I’m at work.”

Chrissy is passionate about her work and has a drive to learn more, so in 2022, she enrolled in the Providence Professional Development Program through Anne Arundel Community College, made possible by the Taylor Comport Scholarship and Professional Development Fund. She completed the program in 2023, and shortly after was promoted to the position of Case Manager. Of the program, Chrissy said, “I truly believe this program is one

of the greatest opportunities this company can provide for the staff, especially for those who have a passion and a desire to go back to school.”

The Development Program has unlocked new possibilities for Chrissy and her colleagues to further their professional journeys. For Chrissy, the journey continues as she is currently participating in Coach Approach’s Project Excite Program to become a Certified Coach Mentor. Coach Approach teaches skills to improve communication, build teams, support creative problem solving and empower leadership. We have no doubt that Chrissy will be successful in any role she takes on, and that her passion for learning and growth – for both herself and the people we support – will benefit Providence well into the future.

# About Providence

At Providence, we believe in people. We believe that everyone should be a part of their community and have access to and enjoy the opportunities around them. We are proud of our exceptional professional staff, our history of service, our community partnerships, and the many men and women who are learning new skills and working and contributing in communities throughout Anne Arundel and Charles Counties in ways that matter to them.

## Board of Directors Officers

### F.P. "Rick" Hunsicker CHAIR

*Retired*

### Jay Eichelberger TREASURER

*Managing Director, Wealthspire Advisors*

### Mary Ellen Tuma VICE-CHAIR

*Retired*

### Rob Manigold SECRETARY

*Retired*

## MEMBERS

---

### Tricia Baldwin

*Treasurer, Reliable Contracting Company, Inc.*

### Tom Belote

*Retired*

### COL (Ret) William C. Doukas, M.D.

*Retired*

### Marietta Dunn

*Retired*

### Sandy Griffin

*Senior Director of Nursing, Women and Children's Services  
Luminis Anne Arundel Medical Center*

### Megan Keller

*Self Advocate*

### Olivia Comport Kelly

*Director of Brand Marketing, Modus Solutions, Inc.*

### Delegate Nic Kipke

*State Delegate, Maryland General Assembly, Vice President, Sales, REPS & Associates*

### Jeff Kirby

*Owner, Superior Softwash*

### Kelly O'Donnell

*CEO O'Donnell Vein and Laser*

### Lynn Zephir

*Community Volunteer and Parent*











Muskrat  
*Ondatra zibethicus*

Raccoon  
*Procyon lotor*

Insects  
and  
Spiders

Fish

Procyon 3



# How To Support

Providence of Maryland's mission is to support people to live their best lives in their communities. We provide more than 200,000 hours of support annually to more than 300 men and women and their families. Providence supports every person in whatever way is important to them and their life. Each person is working hard, with Providence by their side, step by step, to live their best life in their community. To provide the best possible services takes support from the community. Every dollar matters and helps us to support each person to live their best life for themselves.

Want to make a difference for people working hard to build the lives they want in their communities? Make a donation today by calling us at (443) 776-1967 or visit [providenceofmaryland.org](https://providenceofmaryland.org) for more information.

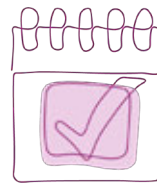
## How To Get Involved



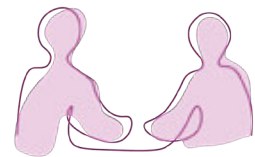
**Donate**



**Volunteer**



**Attend an event**



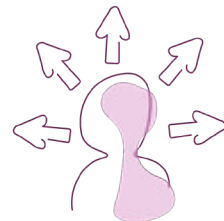
**Obtain supports**



**Employ someone  
we support**



**Shop our Greenhouses  
and Pottery & Arts Studio**

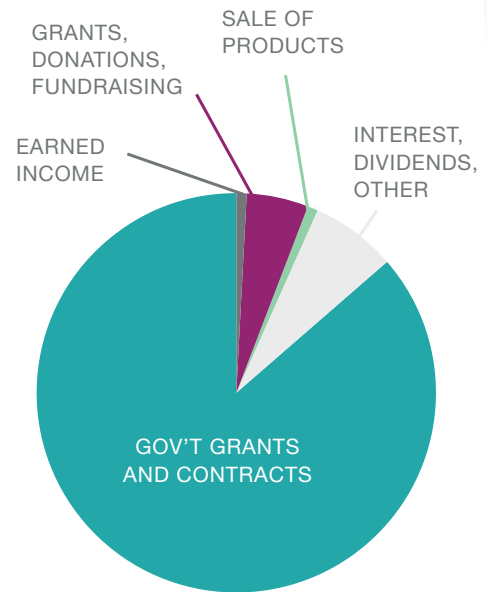


**Start your career  
at Providence**

# Financial Review

## REVENUE AND SUPPORT

EARNED INCOME	\$87,462
GRANTS, DONATIONS, FUNDRAISING	\$860,819
SALE OF PRODUCTS	\$171,312
INTEREST, DIVIDENDS, OTHER	\$1,279,339
GOV'T GRANTS AND CONTRACTS	\$15,437,641
<b>TOTAL</b>	<b>\$17,836,573</b>

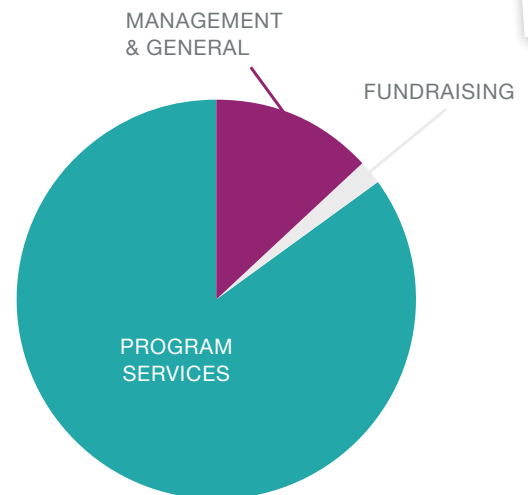


## EXPENDITURES

MANAGEMENT & GENERAL	\$2,066,387
FUNDRAISING	\$374,088
PROGRAM SERVICES	\$12,960,556
<b>TOTAL</b>	<b>\$15,401,031</b>

GROSS PROFIT	\$2,435,542*
NET REALIZED/UNREALIZED GAIN (LOSS) ON INVESTMENTS	\$42,097
<b>NET PROFIT</b>	<b>\$2,477,639</b>

NET ASSETS ACQUIRED THROUGH MERGER WITH CCHARC.*	\$7,497,945
--	-------------



\*Gross profit is atypical and reflects the merger with Charles County HARC and adding Community Living Services.

\*\*Assets acquired through the merger with Charles County HARC are net of assets over liabilities assumed from CCHARC.

Financial information reflects activity during FY24, which covers the period from 7/1/23 – 6/30/24







# Donors

## CORPORATIONS & FOUNDATION

### Champions: \$25,000+

Developmental Disabilities  
Administraton  
Jesse & Hertha Adams  
Charitable Trust  
Maryland Job Corp  
Maryland Transit Administration  
Thomas I. & Peggy A.  
Baldwin Foundation

### Leaders: \$10,000+

Anne Arundel County Executive  
Wealthspire Advisors

### Ambassadors: \$5,000+

Baltimore Gas & Electric Co.  
Cameron Building  
Envelope Specialists  
Chiron Technology Services, Inc.  
David O. and Martha G.  
Campbell Family Foundation  
Hilb, Rogal & Hamilton of Baltimore  
Kelly Insurance & Investments,  
Kelly Financial Advisors  
Moran Insurance  
PNC Bank  
PNC Foundation  
Reliable Contracting Company, Inc.  
Zones

### Advocates: \$2,500+

Art at Large  
Arts Council of Anne Arundel County  
Charles County Charitable Trust  
Creston G. and Betty Jane  
Tate Foundation  
Manis, Canning & Associates  
McGriff Insurance Services  
Thomas Commercial Services  
Waugh Chapel Dental

### Partners: \$1,000+

Baldwin Homes  
Broadneck Elks Lodge 2608  
Cafe Mezzanotte  
Capital Building Envelope  
Chaney Enterprises  
Chesapeake Employers Insurance  
Civitan Club of Glen Burnie  
Craftsmen Developers, LLC  
Danny's Day Foundation  
Enterprise Holdings Foundation  
Exterior Concepts  
Gilbane Development Company

GW Carr Contracting Inc.  
Hyatt Commercial  
Kalas Funeral Home  
Kelly and Associates  
Insurance Group, Inc.  
Koch Family Foundation, Inc.  
McCrone Engineering  
Mullen, Sondberg, Wimbish &  
Stone, P.A.  
PayPal Giving Fund  
Priceless Industries, Inc  
Ravens Roost #33  
Renaissance Life and  
Health Insurance  
Rogers-Wilbur Foundation, Inc.  
RT Speciality  
Sandy Spring Bank  
Selective Insurance Company  
of America  
Shore United Bank  
St. Christopher By The Sea  
The Traffic Group, Inc.  
Thrive Behavioral Health  
Travelers Insurance

### Patrons: \$500+

Charles Mack Design  
Derby-Masson Family Fund at the  
Baltimore Community Foundation  
Kelly Electric  
Knights of Columbus St. Andrew by  
the Bay #11552  
Northco Title Corporation  
Novotny, Larash, Venters & Wolf, LLC  
St. John Properties  
Suzanne Rindfleisch, D.O. and  
Associates, P.A.  
The Joseph Mullan Co.  
Treffer Appraisal Group

### Friends: \$250+

Agency Insurance Company of MD  
American Online Giving  
Hyatt & Weber  
Imperial PFS  
Iroquois Group  
Lee A. Meyers, DDS  
Liquified Agency  
Meinelschmidt Distillery  
Musgrave Lawn & Landscape, llc  
RBC Wealth Management  
Severna Park Elks Lodge B.P.O.E.  
2482  
United Way  
US Charitable Gift Trust  
Womens Fellowship of First  
Presbyterian Church

### Supporters: Up to \$249

America's Charities, Inc.  
Assisted Living Locators of Annapolis  
Chipotle Mexican Grill  
Douglas Realty

Hager Land Use Consulting, LLC  
Haymaker Technologies, Inc.  
Kiwanis Club of Crofton  
Mark Wurzbacher & Associates  
Maryland Charity Campaign  
Metrinko Office Interiors  
Network for Good  
P & M Exhibits LLC  
PNC UK Online Giving  
The Annapolis Photographer  
UKOGF Foundation

## INDIVIDUALS

### Leaders: \$10,000+

Ms. Patricia Shema

### Ambassadors: \$5,000+

Mr. and Mrs. Charles Bagley, IV Esq.  
Mr. and Mrs. Terrence Davis  
Dr. and Mrs. William Doukas  
Mr. and Dr. James Eichelberger  
Mr. and Mrs. Frederick P. Hunsicker  
Mr. and Mrs. Mike McFarland  
Mr. Aubrey McRoberts  
Mr. and Mrs. Charles S. Walsh  
Mr. and Mrs. William Zephir

### Advocates: \$2,500+

Ms. Karen Adams-Gilchrist  
Mr. and Mrs. Jay Baldwin  
Mr. and Mrs. John Belcher  
Dr. and Mrs. James Chappell  
Mr. Rocky Cintron  
Ms. Sherry Cushman  
Mr. and Mrs. Gary Geisel  
Mr. Robert Manigold  
Ms. Michelle Russell  
Mr. and Mrs. George Stephanos  
Ms. Wendy Holden

### Partners: \$1,000+

Mr. John Bachman  
Mr. and Mrs. Gary Badgley  
Mr. Jay Baker  
Ms. Patricia Baldwin  
Mr. J. Robert Bradshaw  
Mr. and Mrs. Douglas Bragdon  
Ms. Veronica Bragdon  
Mr. and Mrs. Troy Brewer  
Mr. and Mrs. Chip Bullen  
Mr. Douglas Canovas  
Mr. and Mrs. Jeffrey Caruso  
Mr. and Mrs. James Clauson  
Mr. and Mrs. Barclay Collins  
Mr. and Mrs. Anthony Cornish  
Mr. and Mrs. Craig H. Decker  
Mr. Robert Dick  
Ms. Chantal Dukette  
Mr. Michael Elger  
Mr. John Gallagher

Mr. and Mrs. John W. Gosnell  
 Mr. and Mrs. James Griesser  
 Mr. and Mrs. John Hardig  
 Mr. and Mrs. John Harper  
 Ms. Bethany Hobbs  
 Mr. and Mrs. Michael Kelly II  
 Mr. Matthew Mace  
 Ms. Cheryl Malone  
 Mr. and Mrs. Wade Mayberry  
 Ms. Kelly O'Donnell  
 Mr. and Mrs. Brian O'Meara  
 Mr. and Mrs. Stephen Peroutka  
 Mr. and Mrs. Mark Robertson  
 Mr. and Mrs. Dennis Wells

### Partners: \$500+

Mr. and Mrs. Chris Beattie  
 Mr. Tom Belote  
 Mr. Robert Branson  
 Mr. and Mrs. Stephen Bupp  
 Ms. Cydney Carlson  
 Mr. and Mrs. Bob Carrier  
 Ms. Patty Cecil  
 Mr. and Mrs. Erik Daly  
 Mr. and Mrs. Chris Diamondidis  
 Mr. and Mrs. John Dixon  
 Mr. and Mrs. Wallace M. Elger  
 Mr. and Mrs. Bill Greenfield  
 Ms. Meredith Harris  
 Mr. Patrick Harvey  
 Mr. and Mrs. Richard Jones  
 Ms. Holly Kelly  
 Ms. Amy Kilen  
 Delegate and Mrs. Nicholas Kipke  
 Mr. Thomas McQuillan  
 Ms. Joan Miller  
 Mr. and Mrs. Terry Miller  
 Mr. and Mrs. Craig Morrell  
 Mr. and Mrs. James Morrow  
 Mr. and Mrs. John R. Mulkey  
 Ms. Susan Owen  
 Mr. and Mrs. Walter Petrie  
 Mr. and Mrs. William Raymond  
 Ms. Tawni Sikon  
 Mr. and Mrs. Michael Stamper  
 Ms. Sherrie Ward  
 Mr. and Mrs. Steve Wern  
 Mr. and Mrs. John B. Wheeler

### Friends: \$250+

Mr. and Mrs. Warren Adams  
 Mr. Terry Artz  
 Mr. and Mrs. William E. Baldwin III  
 Ms. Tracy Batchelor  
 Mr. Robert Birely  
 Ms. Judy Brick  
 Ms. Carrie Brosky  
 Mr. and Mrs. Craig Bullen

Mr. and Mrs. Kyle Callahan  
 Mr. Bert Carp  
 Ms. Kirsten Chapman  
 Mr. and Mrs. David Chisholm  
 Ms. Martha Collinson  
 Ms. Ann Daly  
 Mr. David Demers and  
 Ms. Patricia Lilek  
 Mr. and Mrs. Russ Devoe  
 Mr. and Mrs. Martin Doordan  
 Ms. Marietta Dunn  
 Ms. Alexandra Edwards  
 Mr. and Mrs. David Fee  
 Ms. Jana Fee  
 Ms. Jessica Gibson  
 Mr. and Mrs. R. Scott Gregory  
 Mr. David Hankey  
 Ms. Margaret Harvey  
 Mr. and Mrs. Dave  
 Hesselberth-Plunkert  
 Ms. Cindy Hoffmann  
 Ms. Wendy Hooper  
 Mr. and Mrs. Henry Hopkins  
 Mr. and Mrs. William Jaeger  
 Ms. Mary Chris Jammet  
 Mr. Tony Johnson  
 Mr. and Mrs. Michael Kelly  
 Mr. Dennis Krysiak  
 Mr. and Mrs. Don Kurdziel  
 Mr. Douglas Kurdziel  
 Ms. Cathleen Larner-Beckett  
 Ms. Eleni Leppo  
 Mr. David Lilleflore  
 Mr. and Mrs. Bertrand Mason  
 Mr. David McGuinness  
 Mr. J. Kent McNew  
 Mr. and Mrs. James Millford  
 Ms. Patricia Mitchell  
 Mr. and Mrs. Thomas J. Mulrenin  
 Ms. Sherrie Oertel  
 Mr. Connor O'Meara  
 Mr. and Mrs. Steven E. Parker  
 Mr. and Mrs. Mark Porto  
 Ms. Paige Powers  
 Mr. and Mrs. Rob Scrivener  
 Mr. and Mrs. Charles Shaeffer  
 Mr. Scott Slavin  
 Mr. and Mrs. Joseph P. Smaldone  
 Ms. Patricia Stuntz  
 Mr. Melvin Thomas  
 Mr. Ian Walsh  
 Ms. Joyce Wearstler  
 Ms. Nikki Weaver  
 Ms. Katie Welch  
 Mr. and Mrs. Peter Welcher

### Supporters: Up to \$249

Mr. Ervin Adams  
 Ms. Logan Aguiniga

Ms. Ann Albrecht  
 Mr. and Mrs. Scott Allan  
 Ms. Tara Amabile  
 Ms. Laura Anderson  
 Mr. and Mrs. Frank J. Arsenault  
 Ms. Carrie Baquie  
 Ms. Lakeisha Barrett  
 Ms. Diane Barry  
 Mr. and Mrs. Gary C. Beach  
 Mr. and Mrs. Richard Beattie  
 Mr. and Mrs. Charles Becker Jr.  
 Mr. Charlie Bell  
 Ms. Bonnie Blessing  
 Mr. Norman Bitsoli  
 Ms. Marcia Bond  
 Ms. Jessilyn Bowers  
 Mr. Christopher S Boyce  
 Ms. Joan Brady  
 Ms. Bertina Brown  
 Ms. Simone Brown  
 Ms. Anitra Buster  
 Ms. Jushlynn Cager  
 Mr. and Mrs. Andrew Capaci  
 Ms. Ellen Christian  
 Ms. Paige Clark and Mr.  
 Cory Clayville  
 Mr. and Mrs. Kevin Cline  
 Mr. and Mrs. Mark Clooke  
 Ms. Jennifer Coleman  
 Ms. Kimberly Collison  
 Ms. Jane Conrad  
 Mr. Mike Cooper  
 Ms. Chrissy Cornwell  
 Ms. Ethel Dailey  
 Mr. and Mrs. Lawrence Dancy  
 Ms. Lauren Davis  
 Ms. Brittny Day  
 Ms. Samantha Deavers  
 Mr. and Mrs. John J. Denice  
 Mr. Chris Drewniak  
 Mr. and Mrs. George Dubina  
 Mr. Joseph Duffy  
 Ms. Billie Early  
 Ms. Sara Eger  
 The Honorable and Mrs. Robert  
 L. Ehrlich Jr.  
 Ms. Nina Eldred  
 Mr. and Mrs. Willard G. Eldred  
 Ms. Nicole Fertitta  
 Ms. Beverly Finch  
 Ms. Robin Flewellyn  
 Ms. Doris Fordham  
 Ms. Rhonda Franklin  
 Ms. Jacqueline Freeman  
 Ms. Dawn Fritz  
 Ms. Donielle Gaines  
 Capt. and CDR Thomas  
 P. Gallagher III  
 Ms. Sandra Galloway  
 Ms. Penny Garrett  
 Mrs. Kristina George

\*Gift Information reflects activity during FY23, which covers the period from 7/1/22 - 6/30/23. Event Ticket, Auction and Raffle Purchases are not included in this report.



Mr. and Mrs. Shane George  
 Mr. and Mrs. C. Herbert Gilliland  
 Ms. McShane Glover  
 Ms. Nina Goforth  
 Ms. Karen Goldman  
 Mr. Jonathan Greene  
 Ms. Amy Hager  
 Ms. Beth Hagy  
 Ms. Margot Hall  
 Ms. Sharon Hampton  
 Mr. Barry Harding  
 Ms. Rhonda N. Harding  
 Mrs. Kathy Hargett  
 Mr. and Mrs. James Harrison  
 Ms. Priscilla Hart  
 Ms. Elizabeth Hawley  
 Ms. Sara Heilman  
 Ms. Yirelis Herrera  
 Ms. Alicia High  
 Mr. William W. Hill  
 Ms. Jessica Holman  
 Ms. Madison Hooper  
 Mr. Vincent Iatesta  
 Mr. Robbie Isacs  
 Ms. Lexus Jackson  
 Ms. Carly James  
 Ms. Linda Johnson  
 Mr. and Mrs. Christopher C. Jones  
 Ms. Amy Jordan  
 Ms. Mary Pat Justice  
 Ms. Anita Kassof  
 Mr. and Mrs. Peter E. Katz  
 Ms. Megan Keller  
 Mr. James Kimble  
 Mrs. Jerome W. Klasmeier  
 Mr. and Mrs. James Knudson  
 Mr. Kristensen  
 Ms. Mare Kristensen  
 Ms. Rhonda Kumer  
 Mr. and Mrs. Chris LaCroix  
 Mr. Jesse Lambert  
 Ms. Jennifer Langone  
 Ms. Lisa Lee  
 Ms. Emily Levy  
 Ms. Heather Liberati  
 Mr. Warren Linn  
 Ms. Iris Littig  
 Ms. Chelsea Lohman  
 Mr. and Mrs. Robert Looock  
 Mr. Charlie P. Lopez  
 Ms. Elizabeth Lowe  
 Mr. and Mrs. J.C. Lowery  
 Mr. Josh Luiza  
 Mr. and Mrs. Samuel Lunay  
 Ms. Julie Maccari  
 Ms. Emily Marsh  
 Ms. Julia Maul  
 Mrs. JoAnne Maurer  
 Mr. and Mrs. David Mauriello  
 Ms. Karen Mayberry  
 Ms. Dawn Mazur  
 Mr. and Mrs. John McDonough  
 Ms. Kim McGurk  
 Mr. and Mrs. John McKernan  
 Ms. Sherry Meredith

Ms. Denise Michelle  
 Dr. Edward H. Mitchell  
 Ms. Gina Mitchell  
 Mrs. Sharon K. Molander  
 Ms. Candace Murphy  
 Ms. Donna Murphy  
 Mr. and Mrs. James Murphy  
 Mr. and Mrs. Cullen Murray  
 Ms. Victoria Nagu  
 Ms. Mary Neall  
 Mr. and Mrs. Christopher Nemarich  
 Ms. Earline Newby  
 Ms. Janet Niblock  
 Ms. Gladys Nieves  
 Mr. Vinnie Odell  
 Mr. and Mrs. Thomas O'Leary  
 Mr. and Mrs. Grover Outland  
 Ms. Mary Palko  
 Mr. and Mrs. Douglas F. Parrillo  
 Ms. Patrice Brown  
 Ms. Linda Payne  
 Mr. and Mrs. Robert Pelrine  
 Ms. Yvonne Perry  
 Ms. Carrie Petersen  
 Mr. Mark Pfister Sr.  
 Ms. Christine Piergalline  
 Mr. and Mrs. Eliot D. M. Powell  
 Ms. Charlotte P. Preece  
 Mr. and Mrs. Ronald L. Price  
 Ms. Patricia Pridgen  
 Ms. Laurie Pumphrey  
 Mr. and Mrs. David Reed  
 Ms. Marybeth Reid  
 Ms. Mary Ripkin  
 Ms. Ronda Roemmelt Sneider  
 Ms. Caitlin Ruhl  
 Mr. and Mrs. James W. Ruppel  
 Mr. and Mrs. Jim Saylor  
 Ms. Bridgid Seering  
 Ms. Janet Seering  
 Mr. Rob Sell  
 Ms. Beth Shekinah Terrence  
 Ms. Kristi Simon  
 Mrs. Barbara Smith  
 Ms. Barbara Smith  
 Mr. and Mrs. Russell A. Smith  
 Mr. David Southwick  
 Ms. Kathryn Spanogle  
 Ms. Kim Stallings  
 Ms. Stefanie Hamilton  
 Mr. and Mrs. Rob Strouse  
 Ms. Amanda Thompson  
 Mr. and Mrs. Andrew M. Trettin  
 Ms. Cynthia Trimmer  
 Ms. Sarah Varnado  
 Ms. Lindsey Vyskocil  
 Ms. Samantha Walsh  
 Ms. Christy Ward  
 Mr. and Mrs. Kenneth Watson  
 Mrs. Ana Whitelock  
 Judge Robert C. Wilcox  
 Mr. Rob Wood  
 Mr. Tad Wood  
 Mr. and Mrs. Dan Zeitlin

## IN MEMORY OF

### In Memory of Erica Barbera

Ms. Mary Pat Justice

### In Memory of Taylor Comport

Ms. Logan Aguiniga  
 Mr. Jay Baker  
 Mr. and Mrs. Chris Beattie  
 Mr. and Mrs. Richard Beattie  
 Charles Mack Design  
 Mr. Charlie Bell  
 Ms. Joan Brady  
 Mr. Robert Branson  
 Mr. Douglas Canovas  
 Mr. Bert Carp  
 Ms. Paige Clark and  
 Mr. Cory Clayville  
 Mr. and Mrs. Kevin Cline  
 Ms. Kimberly Collison  
 Mr. Mike Cooper  
 Ms. Lauren Davis  
 Mr. John Gallagher  
 Ms. Jessica Gibson  
 Ms. McShane Glover  
 Mr. and Mrs. Bill Greenfield  
 Haymaker Technologies, Inc.  
 Mr. and Mrs. Dave  
 Hesselberth-Plunkert  
 Ms. Madison Hooper  
 Ms. Wendy Hooper  
 Mr. Robbie Isacs  
 Ms. Carly James  
 Ms. Anita Kassof  
 Kelly Electric  
 Kelly Insurance & Investments,  
 Kelly Financial Advisors  
 Ms. Holly Kelly  
 Mr. and Mrs. Michael Kelly  
 Mr. and Mrs. Michael Kelly II  
 Mr. and Mrs. Don Kurdziel  
 Mr. Douglas Kurdziel  
 Ms. Emily Levy  
 Mr. Warren Linn  
 Mr. and Mrs. J.C. Lowery  
 Mr. Josh Luiza  
 Mr. and Mrs. Samuel Lunay  
 Mr. and Mrs. Thomas J. Mulrenin  
 Mr. and Mrs. Cullen Murray  
 Ms. Janet Niblock  
 Mr. and Mrs. Thomas O'Leary  
 Ms. Sherrie Oertel  
 P & M Exhibits LLC  
 Mr. and Mrs. Robert Pelrine  
 Mr. and Mrs. Mark Porto  
 Ms. Paige Powers  
 RBC Wealth Management  
 Ms. Ronda Roemmelt Sneider  
 Ms. Caitlin Ruhl  
 Mr. and Mrs. Jim Saylor  
 Mr. and Mrs. Rob Strouse  
 Ms. Patricia Stuntz  
 The Annapolis Photographer  
 Mr. and Mrs. Charles S. Walsh  
 Mr. Ian Walsh  
 Ms. Joyce Wearstler

Katie Welch  
Mr. and Mrs. Steve Wern  
Mrs. Ana Whitelock  
Mr. Rob Wood

#### **In Memory of Eugene Harvey**

Mr. Robert Dick

#### **In Memory of**

##### **Patricia Eldred Hudson**

Ms. Nina Eldred

#### **In Memory of Jerry Klasmeier**

Mrs. Jerome W. Klasmeier

#### **In Memory of**

##### **Elaine Manigold, Helen Manigold, Robert Manigold**

Mr. Robert Manigold

#### **In Memory of George Moran**

Metrinko Office Interiors

#### **In Memory of James M. Smith**

Mrs. Barbara Smith

#### **In Memory of John Stephanos**

Mr. and Mrs. George Stephanos

#### **In Memory of Bonnie Wilcox**

Judge Robert C. Wilcox

### **IN HONOR OF**

#### **In Honor of Colleen Baldwin**

St. John Properties

#### **In Honor of Aimee Bullen**

The Joseph Mullan Co.

#### **In Honor of Kelly Harding**

Mr. Barry Harding

#### **In Honor of Jade Jaeger**

Mr. and Mrs. William Jaeger

#### **In Honor of Sean McDonough**

Mr. and Mrs. John McDonough

#### **In Honor of**

##### **Parents and Teachers**

Mr. and Mrs. John B. Wheeler

#### **In Honor of Steven Patterson**

Mr. Aubrey McRoberts

#### **In Honor of Michiko Saito**

Ms. Priscilla Hart

#### **In Honor of Sherry Wahl**

Mr. and Mrs. Mark Robertson

### **IN KIND**

Ace Hardware  
Adam's Taphouse and Grille  
Admiral Cleaners  
Amalfi Coast Italian + Wine Bar  
Angel's Share Wine & Spirits

#### **Art at Large**

Mr. and Mrs. Jay Baldwin  
Ms. Patricia Baldwin  
Mr. and Mrs. John Belcher  
Big Bats Cafe  
Boatyard Bar & Grill  
Ms. Mary Bowen  
Brian Boru Restaurant and Pub  
Bubba's 33  
Mr. and Mrs. Craig Bullen  
Cait's Cheese & The Big Cheese  
Carroll's Creek Café  
Mr. and Mrs. John Carson  
Dr. James Chappell  
Chartwell Golf & Country Club  
Chesapeake Bay Beach Club  
Chesapeake Employers Insurance  
Chick-fil-A of Severna Park  
Crofton Country Club  
Mr. and Mrs. Craig H. Decker  
Donut Shack  
DRIVEN  
Ms. Marietta Dunn  
DUO Signage + Graphics  
Ebb Tide Tent and Party Rentals  
EscapeTime Escape Rooms  
Fieldstone Animal Inn  
Fishpaws Marketplace  
Forward Brewing  
Game On Bar + Arcade  
Mr. and Mrs. Shane George  
Greater Severna Park & Arnold  
Chamber of Commerce  
Green Valley Marketplace  
of Arnold  
Ms. Sandra Griffin  
Ms. Stefanie Hamilton  
Helping Hands Cleaning Service  
Ms. Alicia High  
Ms. Wendy Hooper  
Mr. and Mrs. Frederick P.  
Hunsicker  
Imagination Stage  
Jeff B. Voigt Aerial Photography  
JPAR Real Estate Maryland Living  
Kelly Insurance & Investments,  
Kelly Financial Advisors  
Ms. Amanda Kelly  
Kids First Swim School  
Kilwins Chocolates & Ice Cream  
of Annapolis  
Ms. Cathleen Lerner-Beckett  
Laura's Eyes Photography  
LBO Craft  
Ledo Pizza Severna Park  
Ms. Marsha Legg  
Maryland Plants and Supplies  
Maryland Therapeutic Riding  
Mrs. JoAnne Maurer  
Ms. Haley Mayhew  
Mission Escape Rooms  
Monster Mini Golf  
Moran Insurance  
Ms. Kate Myers  
Mr. Thomas McQuillan

#### **Nails By Dora**

NexGen Performance & Auto Care  
O'Donnell Vein & Laser  
One Slow Sunday  
Park Books & LitCoLab  
Passion Asian Bistro  
Pickles Pub  
Queenstown Harbor Golf Links  
(Re)Focus Studio  
Reliable Contracting  
Company, Inc.  
Ripped Mussels  
Riva Gardens Farm Market  
and Garden Center  
Ms. Kathy Rudkin  
Salty Dog & Sweet P's Swag  
Savvy Consignment  
Ms. Kathy Seering  
Severna Park Lanes  
Severna Park Taphouse  
Signs By Tomorrow  
Superior SoftWash  
The Axe House Annapolis  
The Big Bean  
The Blended Essentials  
The Breakfast Shoppe  
The Brick Companies Foundation  
The Grill at Quarterfield Station  
The Point Crab House & Grill  
Total Wine & More  
Two Rivers Steak & Fish House  
Mr. Tony Vernon  
Yoga Factory Annapolis  
and Crofton  
Zachary's Jewelers

### **HARVEST BASH COMMITTEE**

Colleen Baldwin, Chair  
Tricia Baldwin  
Kim Chappell  
Dave Chisholm  
Melissa Diamondidis  
Sandy Griffin  
Olivia Kelly  
Tina Kelly  
Cathy Lerner-Beckett  
Kathy Seering  
Cathy Stamper  
Ana Whitelock  
Laura Wiegmann

### **MORGAN GOLF CLASSIC COMMITTEE**

Marc Dorman, Chair  
Pat Ernst  
Sandy Griffin  
Rick Hunsicker  
Olivia Kelly  
Jeff Kirby  
Matt Lehmann  
Donna Moran



[providenceofmaryland.org](http://providenceofmaryland.org)

**Anne Arundel County  
Administration**

930 Point Pleasant Road  
Glen Burnie, Maryland 21060  
410-766-2212

**Charles County  
Administration**

79 Industrial Park Drive  
Waldorf, Maryland 20602  
301-932-7030

**Pottery  
& Arts Studio**

40 Church Road  
Arnold, Maryland 21012  
443-955-6073

---

**Greenhouses**

370 Shore Acres Road  
Arnold, Maryland 21012  
410-766-2212

**Cloverleaf  
Community Location**

8223 Cloverleaf Drive  
Millersville, Maryland 21108  
410-766-2212

**Jean Bradbury  
Comomunity Location**

370 Shore Acres Road  
Arnold, Maryland 21012  
410-766-2212

*Providence of Maryland, Inc. is a 501(c)(3) nonprofit organization registered with the State of Maryland. Donations are tax-deductible to the fullest extent allowed by law. A copy of our current financial statement is available upon request by contacting us at 930 Point Pleasant Road, Glen Burnie, MD 21060, (443) 776-1967. Documents and information submitted to the State of Maryland under the Maryland Charitable Solicitations Act are available from the Office of the Secretary of State for the cost of copying and postage.*